

TEAM KENYA 

CORPORATE PARTNERSHIPS 2026

Educating Girls, Empowering Women,
Transforming Communities in Western Kenya

CREATE MEASURABLE CSR IMPACT



TEAM KENYA

ABOUT US

Team Kenya is a UK-registered charity, founded in 2008, working in partnership with our grassroots organisation **Twende Pamoja** in Ndhiwa, Western Kenya.

We deliver community-led programmes that:

- Educate girls to break the cycle of poverty.
- Empower women through leadership, financial independence, and equality.
- Transform communities through technology, entrepreneurship, sustainable farming, and ethical tourism.



£2M

INVESTED IN EMPOWERING
WOMEN AND EDUCATING GIRLS

IMPACT

IMPACTED OVER
250,000 LIVES



OUR IMPACT



£2M+ secured

To fund community-led programmes.



250,000+ lives

Impacted in Western Kenya.



8,000+ Trees

Planted in collaboration with schools and students promoting sustainability.



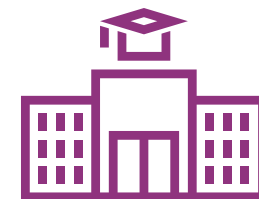
4,000+ women

Empowered through 23 table-banking groups.



80,000 + girls

Benefited from TP's work in their schools



21 Schools

Engaged in STEAM and digital programmes.

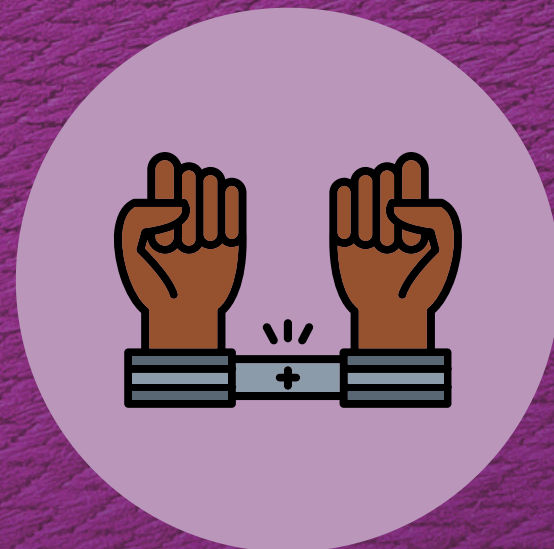
TEAM KENYA



180+ Sportswomen
Empowering women through sports.

TEAM KENYA 

WHY NDHIWA?



NEARLY 29% OF THE
GIRLS ARE CHILD BRIDES



- 1 80% of women and children live in extreme poverty.
- 2 80% of teenage mothers drop out at primary level before reaching secondary
- 3 Over 70% of households rely on rain-fed farming, losing up to 60% of crops in dry seasons.

TEAM KENYA

OUR FOCUS AREAS



EDUCATION

Access to quality schooling, STEM opportunities, life skills, and leadership development for girls.

WOMEN'S EMPOWERMENT

Promoting gender equality, leadership, financial literacy, and entrepreneurship.

COMMUNITY DEVELOPMENT

Strengthening livelihoods through agribusiness, enterprise creation, and ethical tourism.

SUSTAINABILITY & INNOVATION

Investing in tech and digital education, climate-smart farming, tree planting, Karibuni Eco-Cottages and renewable energy solutions.





COMMUNITY-LED PROJECTS



Education Success for Girls in Schools with the latest Technology

- Empowering girls through health, life skills, and well-being education.
- Building leadership and advocacy through STEAM clubs and digital training for students and teachers.
- Fostering inclusive empowerment through mixed-gender initiatives, including book clubs, libraries, forums to raise awareness of gender-based violence, and football.

WORLD'S FIRST MOBILE SOLAR SMART CLASSROOM

We harness the latest solar-powered digital technology to bring quality education to even the most remote areas. The Smart Solar Media Systems —equipped with modular batteries, projectors, and speakers— can transform any space into a fully functional smart classroom.



Visual Learning

Audio Learning

Solar Energy




Modular Energy

TEAM KENYA



ENTERPRISE DEVELOPMENT

Promoting Entrepreneurship for Sustainable Development

-  Karibuni Eco-Cottages: A model for ethical tourism that offers immersive experiences while directly supporting local communities.
-  Driving social and economic growth through agribusiness, entrepreneurship training, financial literacy, and access to table banking.
-  Advancing sustainable practices through tree nurseries, climate-smart agricultural education, and clean energy initiatives.



FROM FARMING TO BUSINESS ENTERPRISE

Training communities in climate-smart agriculture to reduce crop losses and increase food security. With over 70% of households dependent on rain-fed farming—and losing up to 60% of crops in dry seasons—we empower farmers to achieve financial independence.

TEAM KENYA

HOW YOUR SUPPORT CHANGES LIVES



IDA TOM

No Shoes, No Limits: How a Village Girl Became a Football Star.

[READ STORY](#)



MILLICENT OKENO

Mother's Power: Building a Business for Her Daughters' Future.

[READ STORY](#)



JOAN

Joan's Path to Purpose: A Journey into Medical Science.

[READ STORY](#)



NOVEN

Noven's Journey: From Student to Changemaker.

[READ STORY](#)



L'ORÉAL
FUND FOR WOMEN

 UK Government

orangebus.

 Tespack

 MACQUARIE

PARTNERSHIPS



TEAM KENYA 

MCKESSON

 Kibro

WHY CORPORATES SHOULD PARTNER WITH TEAM KENYA

ALIGNMENT WITH CSR GOALS

Partnering with Team Kenya helps to demonstrate a company's commitment to gender equality, sustainable development (SDGs), and capacity building in underserved communities.

EMPLOYEE ENGAGEMENT & RETENTION

These packages provide meaningful ways for employees to volunteer, fundraise, and travel — building morale, leadership, and team cohesion.

BRAND REPUTATION

Through visibility in Team Kenya's materials and events, our partners can showcase its commitment to impactful, results-driven philanthropy.

REPORTING & IMPACT TRANSPARENCY

Team Kenya can deliver regular impact reports, stories, and data — aligning with corporate needs for measurable social returns.

SCALABILITY & FLEXIBILITY

Packages can be tailored to a company's budget, geographical footprint, and CSR strategy.

MEASURABLE IMPACT

Team Kenya commits to transparent reporting, with measurable indicators and regular updates to demonstrate ROI in social impact.

HOW YOU CAN MAKE IMPACT WITH

TEAM KENYA 



Staff-led fundraising



Payroll giving



Corporate foundation donations



Pro-bono services



Cause-related marketing



Charity partnership customised packages

We are registered with Benevity, a CSR software platform
Learn more: www.benevity.com

OUR CORPORATE PARTNERS' TESTIMONIALS

“ We set out to make a difference and ended up finding lifelong friends. From the climbs to the classrooms, every moment with Team Kenya has shown how small acts of kindness really can make all the difference. ”

Mike Parker, CEO & Founder of
Orange Bus

orangebus.

“ From our past collaborative experiences, we've witnessed the confident and proud smiles on the girls' faces as they play on the court. We are deeply impressed by the dedication of the Team Kenya CIO volunteer team, led by the tireless efforts of founder Valerie, who works diligently to solve problems and gather the necessary experiences to provide the best opportunities for our girls. ”

Nina Jiabao Zang, Founder of KIBRA

 **Kibra**

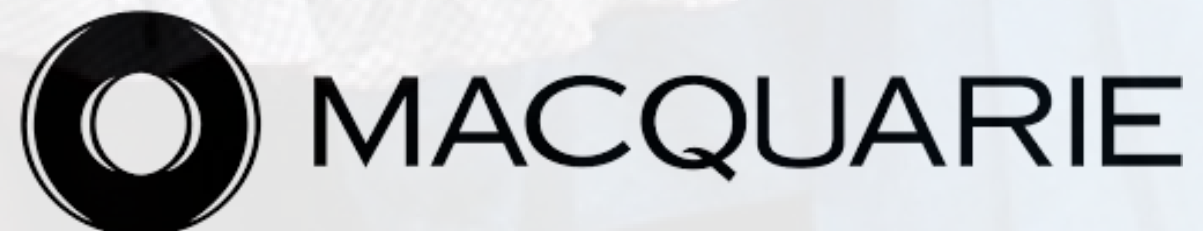


TEAM KENYA



“ Our partnership with Team Kenya is a strong example of how Macquarie’s employee-led giving model translates personal commitment into meaningful community impact. Beyond funding, the partnership created opportunities for Macquarie employees to connect with global development issues through presentations, volunteering initiatives, and internal networks. This holistic approach reflects our commitment to leveraging both financial and non-financial resources to strengthen community organisations. ”

Frithiof Wilhelmsen, Managing Director of Shipping Finance at Macquarie Group



“ We are inspired by Team Kenya’s vision for every girl to have an equal chance to achieve her potential and be free from poverty. At McKesson, our I2CARE values are foundational to all that we do, and our partnership with Team Kenya shares the fundamental values of Collaboration, Integrity, Inclusion and Respect, while supporting our equal opportunity, gender equality and diversity principles. We are delighted to support the transformation Team Kenya is leading in the Ndhiwa community. ”

McKesson Healthcare Corporation



TEAM KENYA



Email

hello@team-kenya.co.uk



Website

www.teamkenya.org.uk

Follow Us

